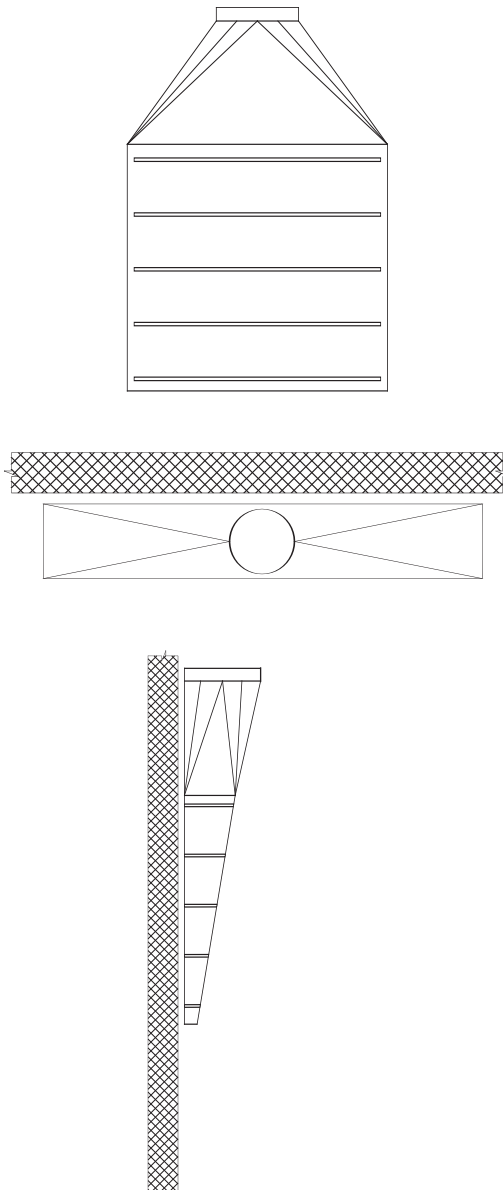


Model **HAI-FE**

**Slot-type hood**

**D**



**Description :**

HCE slot-type exhaust hood without filters.  
Model HAI-FE.

**Specifications :**

- Constructed of sturdy 18-gauge (1.2 mm) stainless steel
- Up to 16' 0" (4,877 mm) in length
- Easy installation
- Quick delivery

**Construction :**

Exposed hood surface: type 304 stainless steel with #4 finish (brushed). All visible welded joints are polished to match original finish.

**Options :**

- Adjustable slots
- End skirt panels on each side of the hood

**Suggested model**

- **For laboratories**